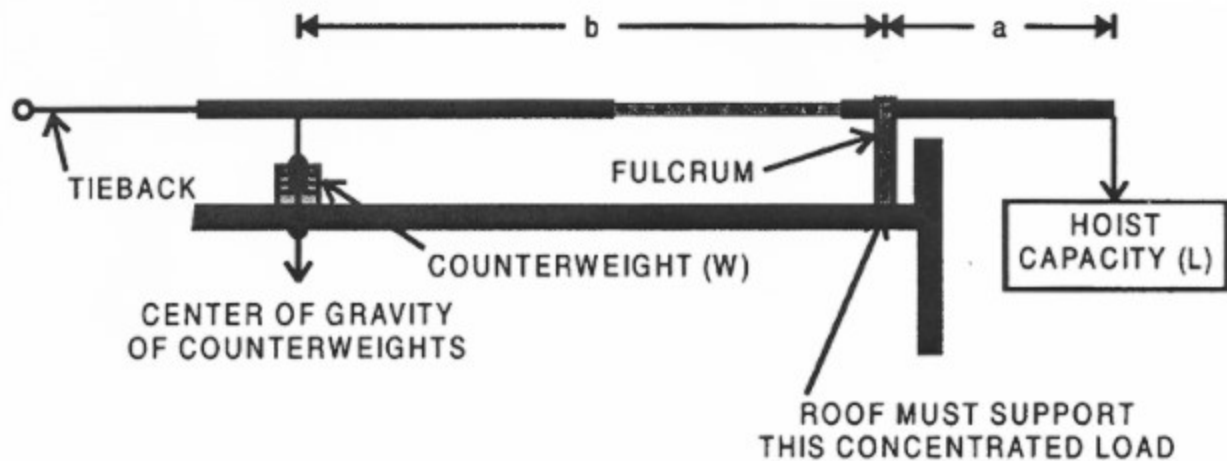


Counter Weight Formula

[Home](#) > [Online Resources](#) > Counter Weight Formula



W = Counterweight

L = Load Capacity Of Hoist

a = Arm Reach

b = Backspan Distance (Distance between the fulcrum point and the center of the counterweights)

4 = Safety Factor (4: 1)

Note: Counterweights must be a nonflowable material, and they must be attached to the outrigger beam

Always use taut tieback wire ropes capable of holding the full load.

$$W = (La)4/b$$