



Headquarters: 2145 Indian Road • West Palm Beach, FL 33409 • Phone (888 or 561) 616-9003 • Fax (561) 616-9005
West Coast Branch: 6481 Orangethorpe Ave., Suite 7 • Buena Park, CA 90620 • Phone (714) 739-5200 • Fax (714) 739-

Digester Platform Instructions

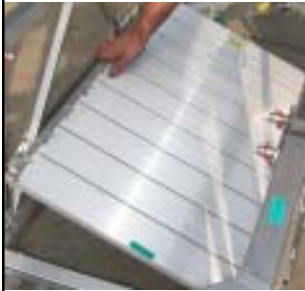


- This platform is designed to be used in combination with 4 traction scaffold hoists (with a 1000 lb. load capacity) for the purpose of repair and maintenance inside tanks and vessels with a diameter of 17-1/2 to 19 ft.
- The maximum distributed load capacity is 2,000 lbs. with a maximum point load of 50 lb/sq.ft.
- Before assembling this platform, read and understand the separately supplied “Assembly and Operating Manual” for the ALTREX Modular Platform.
- Assemble this platform on a level surface to facilitate proper alignment of the connections. Tools needed: 2 adjustable wrenches and a rubber mallet.
- Install the included perimeter guardrails if the work surface is more than 12” from the edge of the platform.

WARNING: failure to properly assemble this platform can result in injury or death.



PARTS LIST:



8 x 1m Deck

16 x 1m Side Frame



8 x 1m Guardrail

8 x 45 degree corner section



16 x U-frame

16 x Guardrail Post



4 x Caster Assy.



20 x Quickpin

8 x Roller Bumper

4 x Crawl Thru Stirrup



18 x Dancefloor Bracket



8 x Round Tubing

5 x Custom Deck Section





1. Mount the side frames to the U-frames with 4 quickpins per side frame. Secure the quickpins with the locking clips. Repeat until you have built up 2 half circles.
2. Install 2 casters on each platform half. (Slide into bottom of U-frame post)



3. Connect the two halves to form a complete circle.





4. Install the Altrex decks. If the surface is not exactly level, you may have to move the platform up and down in several areas to make the decks fit properly. Excessive force should not be necessary! Make sure that the decks are locked by the built-in spring-loaded locking clips.

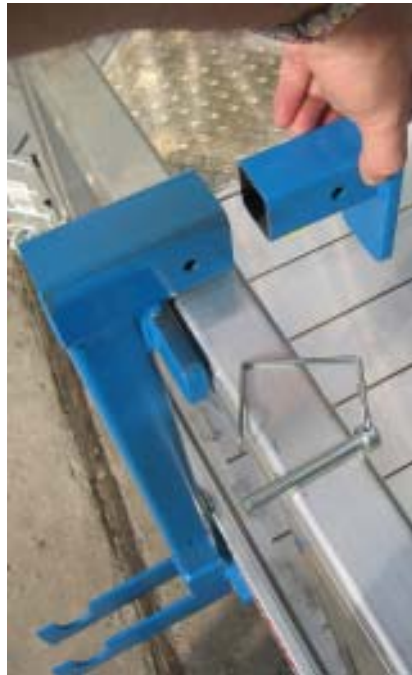
5. Install the hoist mounting stirrups. They should be equally spaced around the platform. First, hook the L-bracket onto the midrail.

6. Then, hook the vertical post onto the opposite midrail.

7. Tighten the 3/4" bolt to secure the stirrup frame.

8. Move the top frame into position and secure with 2 quickpins. The top frame is designed to pivot under load in order to provide some flexibility in the alignment of the rigging points above. When the wire rope is slack, the frame will lock into a vertical position to keep the hoist upright. The top frame can initially be tilted down to facilitate the mounting of the hoist.





9. Install the dancefloor brackets onto the midrails and secure with the quickpins. Each side frame should have 2 brackets positioned next to a U-frame.

10. One set of two side frames opposite each other need a third bracket positioned in the middle. This bracket will help support and lock down the rectangular custom deck. (See picture on page 1.)



11. If roller bumpers are desired, they should be installed at this time. First hook the back of the bracket onto the toeboard and then screw the T-handle bracket down onto the opposite toeboard.



12. Place the round tubing onto the dancefloor brackets to support the custom decks.
NOTE: make sure all tubes meet each other end to end. This will ensure that they interlock and are prevented from sliding out.



The platform should now look like the above picture.



13. Place the custom decks onto the dancefloor supported tubing.



14. Install the locking brackets to prevent the custom decks from lifting up while suspended.



15. Install the included perimeter guardrails if the work surface is more than 12" from the edge of the platform. The 1 meter guardrails are secured with built-in spring-loaded buttons. The 45 degree corner guardrails are secured with the supplied quickpins.



Bee Access Products

2145 Indian Road
W. Palm Beach, FL 33409
Phone: 561-616-9003
Toll free: 888-616-9003
Fax: 561-616-9005
info@beeaccess.com
www.beeaccess.com

West Coast Branch:
6481 Orangethorpe Ave,
Suite 7
Buena Park, CA 90620
Phone: 714-739-5200
Fax: 714-739-5300
ayresaccess@aol.com